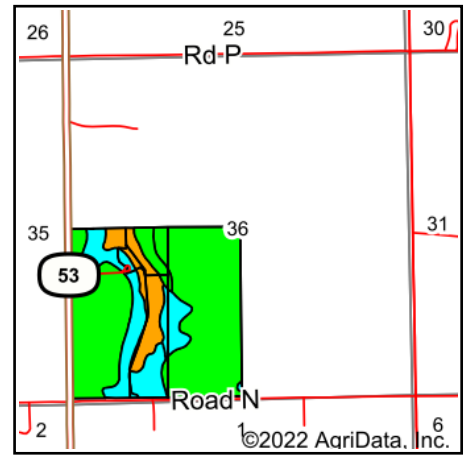
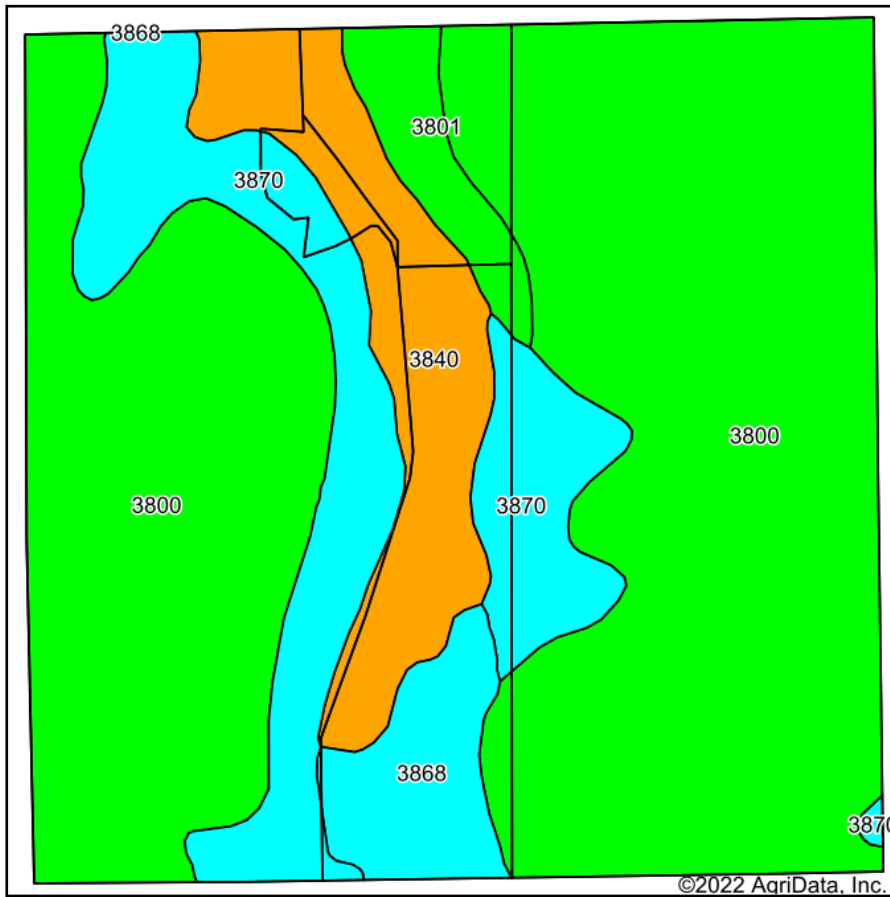


Soils Map



State: **Nebraska**
 County: **Thayer**
 Location: **36-3N-1W**
 Township: **Gilead**
 Acres: **155.77**
 Date: **12/27/2022**

Maps Provided By:

 CUSTOMIZED ONLINE MAPPING
 © AgriData, Inc. 2021 www.AgriDataInc.com



Area Symbol: NE169, Soil Area Version: 19

Code	Soil Description	Acres	Percent of field	Non-Irr Class Legend	Non-Irr Class *c	Irr Class *c	SRPG	*n NCCPI Soybeans
3800	Crete silt loam, 0 to 1 percent slopes, loess plains and breaks	104.04	66.8%			Ils	Ils	66
3870	Hastings silty clay loam, 3 to 7 percent slopes, eroded	24.27	15.6%			IIle	IIle	70
3840	Geary silty clay loam, 7 to 11 percent slopes, eroded	15.97	10.3%			IVe	IVe	69
3868	Hastings silt loam, 3 to 7 percent slopes	6.92	4.4%			IIle	IIle	71
3801	Crete silt loam, 1 to 3 percent slopes, loess plains and breaks	4.57	2.9%			Ile	Ile	65
Weighted Average					2.41	2.41	21.1	*n 64.3

*n: The aggregation method is "Weighted Average using all components"

*c: Using Capabilities Class Dominant Condition Aggregation Method

Soils data provided by USDA and NRCS.