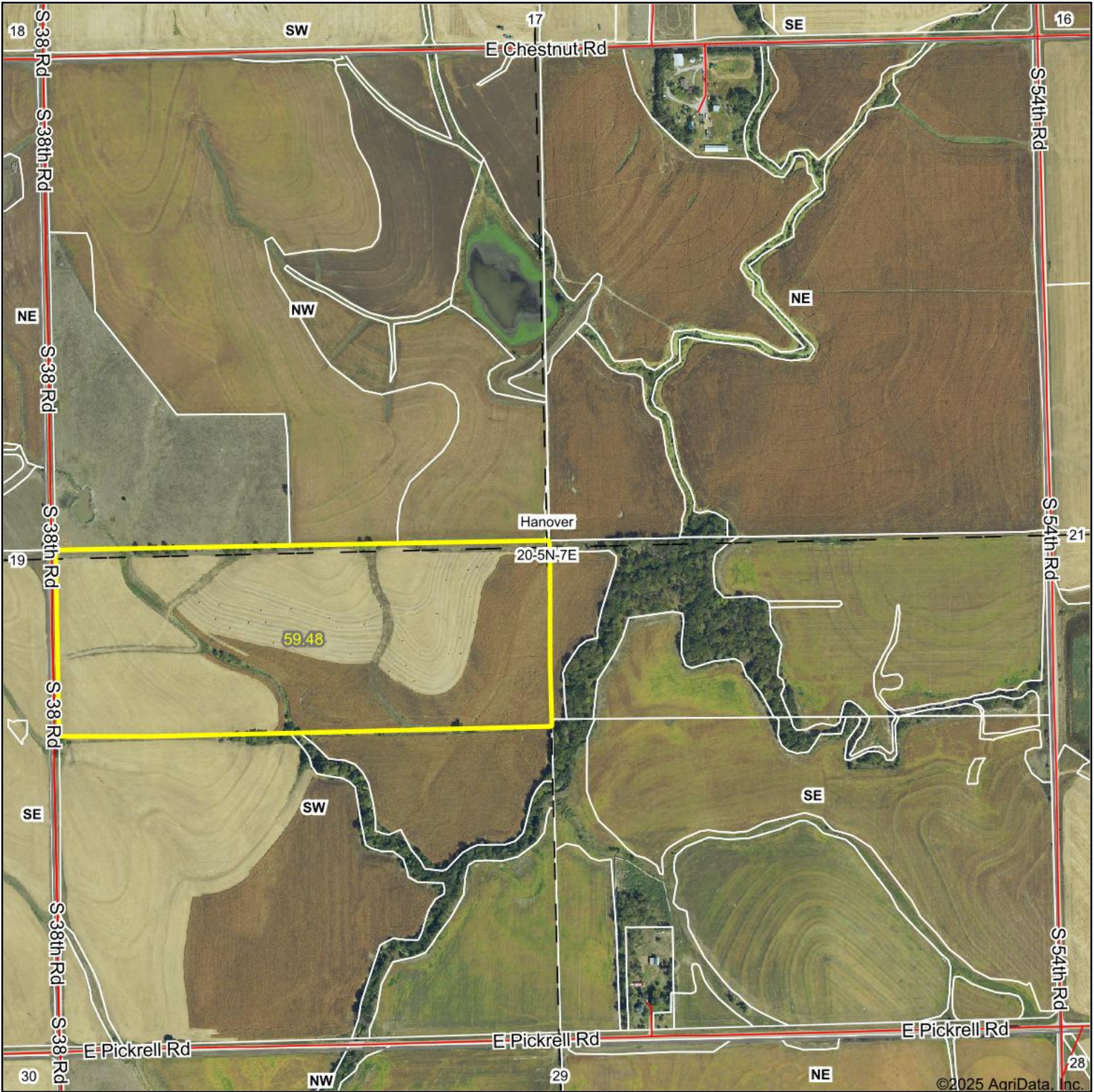


# Aerial Map



Boundary Center: 40° 23' 3.25, -96° 39' 42.99



**20-5N-7E**  
**Gage County**  
**Nebraska**



Maps Provided By:

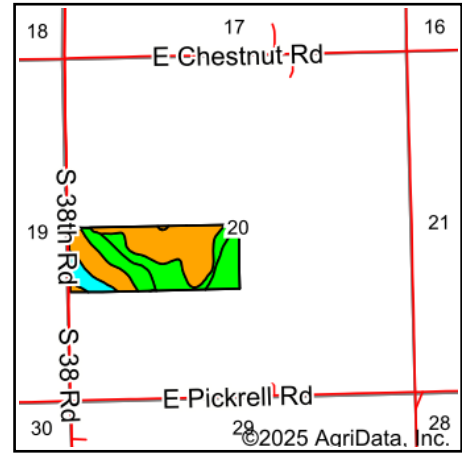
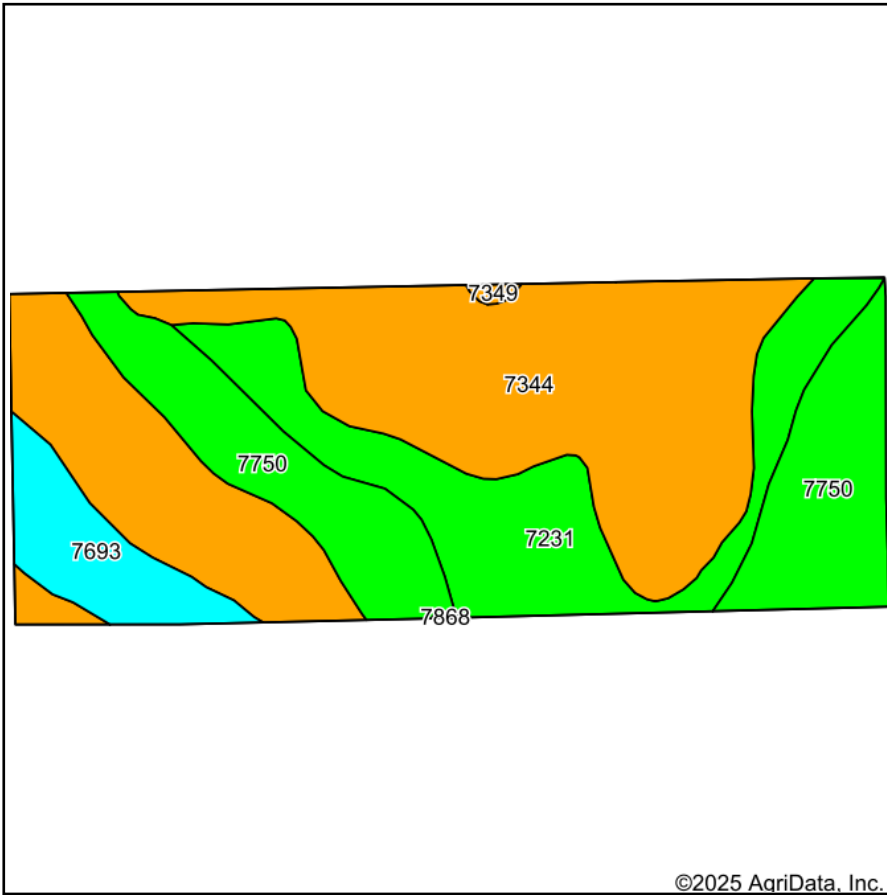


© AgriData, Inc. 2023 www.AgriDataInc.com

1/21/2025

Field borders provided by Farm Service Agency as of 5/21/2008.

# Soils Map



State: **Nebraska**  
 County: **Gage**  
 Location: **20-5N-7E**  
 Township: **Hanover**  
 Acres: **59.48**  
 Date: **1/21/2025**

Maps Provided By:  
  
 CUSTOMIZED ONLINE MAPPING  
 © AgriData, Inc. 2023 [www.AgriDataInc.com](http://www.AgriDataInc.com)



Soils data provided by USDA and NRCS.

Area Symbol: NE067, Soil Area Version: 27

Code	Soil Description	Acres	Percent of field	Non-Irr Class Legend	Non-Irr Class *c	Irr Class *c	SRPG	Alfalfa hay Tons	Alfalfa hay Irrigated Tons	Bromegrass alfalfa AUM	Bromegrass alfalfa Irrigated AUM	Corn Bu	Corn Irrigated Bu	Grain sorghum Bu	Grain sorghum Irrigated Bu	Soyl Bu
7344	Malmo, eroded-Pawnee complex, 6 to 11 percent slopes	30.13	50.6%		IVe		52									
7750	Nodaway silt loam, occasionally flooded	13.51	22.7%		IIw	IIw	74									
7231	Judson silt loam, 2 to 6 percent slopes	11.54	19.4%		IIe		80									
7693	Wymore silty clay loam, 2 to 6 percent slopes	4.15	7.0%		IIIe	IIIe	69									
7349	Malmo clay loam, 2 to 6 percent slopes, eroded	0.15	0.3%		IVe		58									
<b>Weighted Average</b>					<b>3.09</b>	<b>*-</b>	<b>63.6</b>	<b>*-</b>	<b>*-</b>	<b>*-</b>	<b>*-</b>	<b>*-</b>	<b>*-</b>	<b>*-</b>	<b>*-</b>	<b>*-</b>

\*n: The aggregation method is "Weighted Average using all components"

\*c: Using Capabilities Class Dominant Condition Aggregation Method

\*-: Irr Class weighted average cannot be calculated on the current soils data due to missing data.

Soils data provided by USDA and NRCS.